

# Smart Video Doorbell

## Quick Start Guideline

Please read it carefully before usage and save the manual for future use

# Contents

<b>I . Packing List.....</b>	<b>1</b>
<b>II . The Doorbell Instruction.....</b>	<b>2</b>
<b>III . Get Started.....</b>	<b>3-15</b>
1.Charging and Powering Doorbell.....	3
2.Download the APP - XSH Cam.....	3
3.Connect the Doorbell with the APP.....	4-12
4.Change the Melody of Dingdong Chime.....	13
5. Fix the Doorbell to the Wall.....	13-14
6. Share the doorbell to your Family.....	15
<b>IV . Menu Overview.....</b>	<b>15</b>
1.Icon.....	15
2.Push mode.....	16
3.PIR Detection Instructions.....	17-18
4.Cloud Storage.....	18
<b>V . Doorbell Technical Specification.....</b>	<b>19</b>
<b>VI . Troubleshooting.....</b>	<b>20-21</b>
<b>VII . Contact Us.....</b>	<b>22</b>

## Functions



1080P Full HD Camera with 166 degree wide-angle camera lens.



Support mobile phone remote fast wakeup device.



2.4G Wi-Fi connection only.



High quality two-way talk without noise.



Support PIR motion detection,when someone hovers at the door, immediately alerts push notifications to the mobile phone.



Infrared Night Vision: whether day or night, the image is clearly visible, provide you a safe environment.



Low power Consumption :  
Two 18650 batteries  
forabout 6 months in Standby Mode








Easy to install



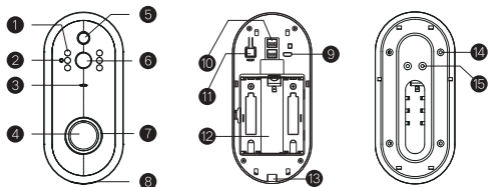
Free cloud storage

# I .Packing List

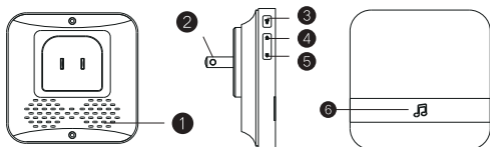
After opening the package, please make sure the doorbell, dingdong in good condition, and verify all parts below complete.

 <p>Doorbell (including Mounting Bracket)</p>	 <p>Screw Package (including Conductive Screw)</p>	 <p>3M Industrial adhesives</p>
 <p>Quick Start Guideline</p>	 <p>Power Wire</p>	

## II .The Doorbell Instruction



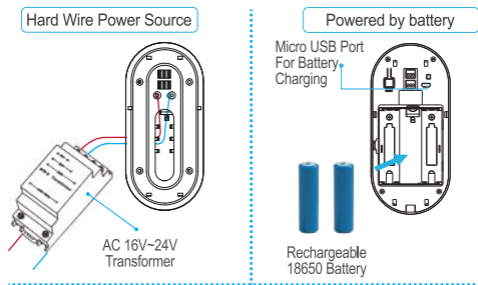
- |                       |                |                   |                     |
|-----------------------|----------------|-------------------|---------------------|
| ① IR LED              | ② Light Sensor | ③ MIC             | ④ Button            |
| ⑤ PIR                 | ⑥ Lens         | ⑦ Indicator Light | ⑧ Speaker           |
| ⑨ USB Interface       | ⑩ AC Input     | ⑪ Reset           | ⑫ Battery Component |
| ⑬ Security Screw Hole | ⑭ Fixed Hole   | ⑮ AC Input Hole   |                     |



- |           |            |          |           |            |       |
|-----------|------------|----------|-----------|------------|-------|
| ① Speaker | ② AC Input | ③ Volume | ④ Forward | ⑤ Backward | ⑥ LED |
|-----------|------------|----------|-----------|------------|-------|

### III . Get Started

#### 1. Charging and Powering Doorbell



Thank you for choosing our products! Please follow below instructions to setup and use your doorbell device.

#### 2. Download the APP - XSH Cam

Scan the following the QR code or search "XSH Cam" on the app store to download the app. Note: Allow the app to send notifications to your phone firstly.



App iOS



App Google play

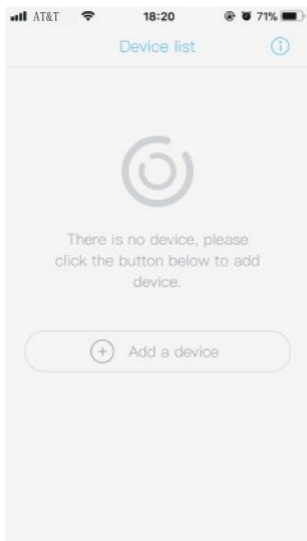


APP-Android

### 3. Connect the Doorbell with the APP

Step 1:

Tap “Add a Device”



Step 2:

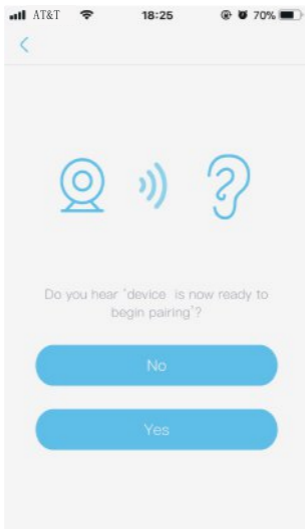
Tap “Setup device”. Note: If you have multiple devices, only setup one at a time





### Step 3:

Before setup, make sure the device is in configuration — long press the "Reset Button" for 5 seconds with a voice prompt "The camera is now ready to begin pairing". Then tap "Yes"



#### Step 4:

The name of the Wi-Fi network will automatically be filled in, enter the Wi-Fi password. The APP will fill the corresponding password automatically if connected with the same Wi-Fi, and you don't need to fill the password again. Then please tap "Next".

AT&T 18:25 70%

< Connect to Wi-Fi

Select Wi-Fi Search device Add device

Wi-Fi name

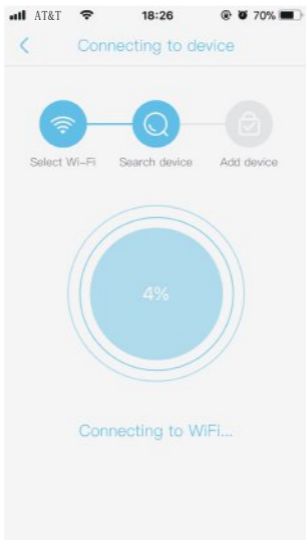
Wi-Fi password

Next

### Step 6:

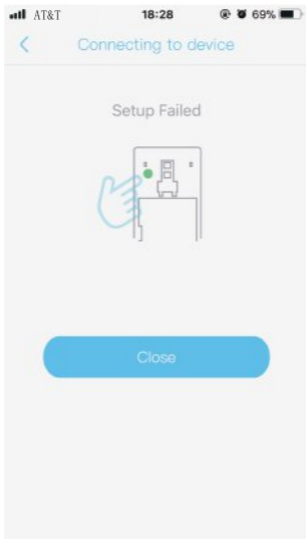
The mobile device will emit sound waves, keep quiet and make sure about 30cm distance between the phone and the device , and waiting for the device to configure the network.

Note: Do not mute your phone



### Step 7:

If your doorbell fails to connect, reset the doorbell and repeat all the steps (please see the previous section, and reset the doorbell)



## Step 8:

After a successful connection, you will be prompted to create a name and password for your camera. The password must be at least 8 characters and include an uppercase letter, a lower-case letter, and a number.

AT&T 18:31 69%

Select Wi-Fi Search device Add device

Device

Enter password

confirm password

Password must be at least 8 characters.

Finish

Step 9:

Setup completed! The APP will be entered the device list interface automatically. Congratulations! The device is ready for use.



## Attention:

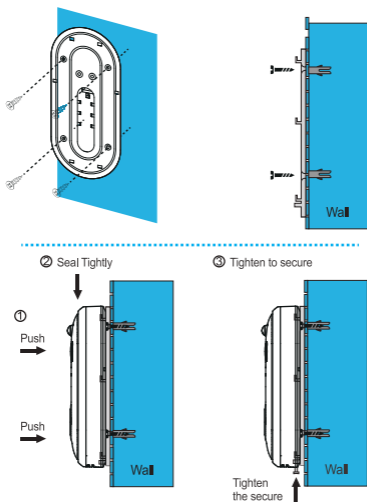
- ① Make sure that your doorbell is connected to a 2.4GHz network, not a 5GHz network
- ② Keep the doorbell in range of the router. Thick or insulated doors can greatly reduce strength of your wifi signal even if your router is close by
- ③ Please charge the doorbell when you receive it. Low power will influence the connection and functions
- ④ Before usage, please remove the insulation from the battery
- ⑤ The cloud storage is defaulted to off. So please remember to open it when setup the APP in the first time
- ⑥ If you buy a new SD card, please choose a legitimate branded C10 SD card and format it before use
- ⑦ Don't mute your phone. The doorbell is connected to the app through the sound wave
- ⑧ In crowded environment, it is recommended to close or set the device to low sensitivity to reduce device arousal and call times to extend battery life

## 4. Change the Melody of Dingdong Chime

There are 52 melodies for you to choose. Tap the “Forward” or “Backward” button to choose a melody you like. Then long hold and press the “Volume” button until the LED light on the chime always blue, immediately press the doorbell button and the light flashes blue. It’s OK.

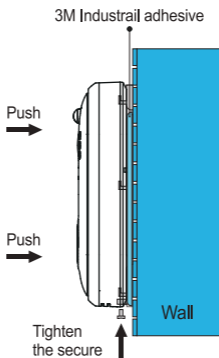
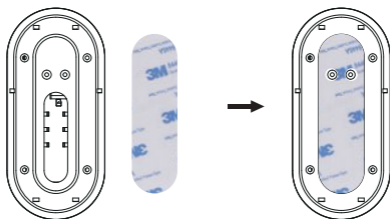
## 5. Fix the Doorbell to the Wall

Guide 1: Installed by the screws on the wall






## Guide 2: Installed by the 3M industrial adhesive









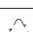
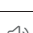

- Steps:
1. Clean up and dry the surface
  2. Remove the protection and adhere to the wall
  3. Press tight

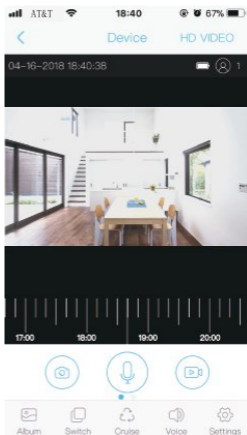
## 6. Share the doorbell to your Family

- From the home page, tap “” on the right corner
- Tap “Share QR Code”
- Open the new user’s app, tap “Add a device”
- Tap “Scan QR Code” to scan the QR Code on step 2.  
It’s OK.

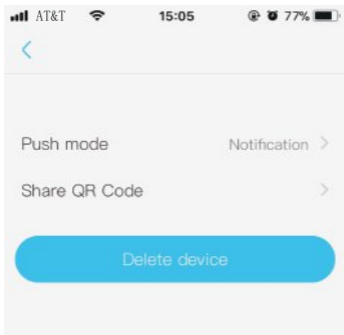
## IV. Menu Overview

### 1. Icon

	Screenshot
	Talkback
	Record
	For future use
	Album
	Switch/ Cloud Video
	Cruise
	Voice
	Setting



## 2. Then you will enter the device settings

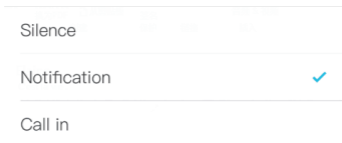


### Push mode

Silence - Will not receive any information when somebody press the doorbell or close the door

Notification - Receive a notification

Call in - Receive a phone call.



## Share QR Code

Send the QR code to share the device to your friends and family or someone that you want to share.

Share QR Code



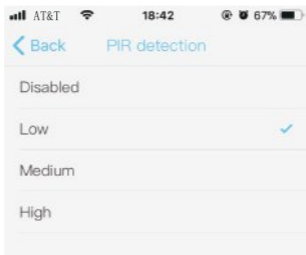
## Delete device

The mobile device will not receive the notifications after you delete the camera. But the camera still works and the other connected mobile devices still able to receive the notifications.

Delete device

## 3. PIR Detection Instructions

In the "Settings", you can set "PIR detection". Tap it to open the submenus like follows:



Disabled - Close the PIR function.

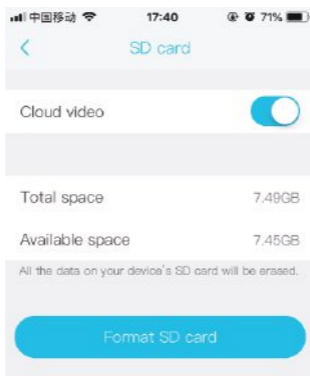
Low - The device will be waken up after device detects human's movement for 7 seconds. Then the device starts to take videos and push notification to your phone at the same time.

Medium - The device will be waken up when it detects the movement for 5 seconds.

High - The device will be waken up when it detects the movement for 1 seconds.

## 4.Cloud Storage

The cloud storage is defaulted to off. So please remember to open it when setup the APP in the first time. Enable it, then it will appear on the live view home page.



## V . Doorbell Technical Specification

Resolution	1920* 1080
Field of Angle View	166°
IR LED	6*850mm
Wi-Fi	IEEE 802 11 b/ g/ n
Audio	Two-way talk without noise
Recording	Device SD Card recording (20 seconds)
Storage	Support 8G/16G/32G
Battery	Two18650 specification batteries
Monitoring	Device Button, Motion Detection, Remote Live View
Notifications	Push Notifications quickly
Device Wakeup	Fast wake up and push notification
Power Consumption	Power Consumption Standby200 uA, Working170 mA

## VI. Troubleshooting

Q: Why setup failed?

- A:
1. Make sure that your camera is connected to a 2.4GHz network, not a 5GHz network;
  2. Have you mute your phone? The doorbell and your phone app is connected through the sound wave. If you mute your phone, it will setup failed;
  3. During the connecting process, please keep your phone close to the doorbell;
  4. Check your wifi password is right;
  5. Network is poor. Please keep it close to your router or reduce the devices connecting to the wifi, then reset the camera again;
  6. Long wifi name and password may cause the failure. And they can't include a blank.
  7. The battery is in low power, please charge it.

Q: Why can't I receive the notification?

- A:
1. There are 3 push modes: silence, notification and call in for you to choose. Please choose one you want
  2. There are 4 motion detection sensitivities: low, medium, high and disabled for you to choose in the setting. Please check whether you have opened it.
  3. May I know that have you allowed the App to push the notifications to you? You need to set it in settings of your phone. Many people always choose to close it when download a new app.
  4. Only when the app runs in the background can you receive the notifications. If your app is in the live interface or you close the app, you won't receive it.

Q: How many users can view the video at the same time?

- A: Up to 4 users can use the doorbell, receive the notification and view the video at the same time.

Q: When will I will receive the notifications?

A: When someone presses the doorbell button or the PIR detects someone and send notifications to you, both of them will be recorded.

Q: Where the video stored?

A: For the recording, there are 2 ways to record the video—free cloud storage and built-in a 8G SD card. The video will be automatically stored in the Cloud firstly and then stored in the card. For the cloud storage, it can store 20 pcs information(8 second each) every day, 140 pcs one week and then loop recording. For SD card,there is a 8G SD card included.

Q: How to charge the battery?

A: Two ways for you:

- 1.Charge the battery directly by charging the doorbell with the cable;
- 2.Remove the battery and use the 18650 battery charger.

Q: What should I do if the doorbell often sent notifications to me at night?

A: There are 3 motion detection sensitivities: low, midium, high and disabled for you to choose in the setting. If it is too sensitive for you, you can set the PIR to “Low” or push mode to “Silence”.