

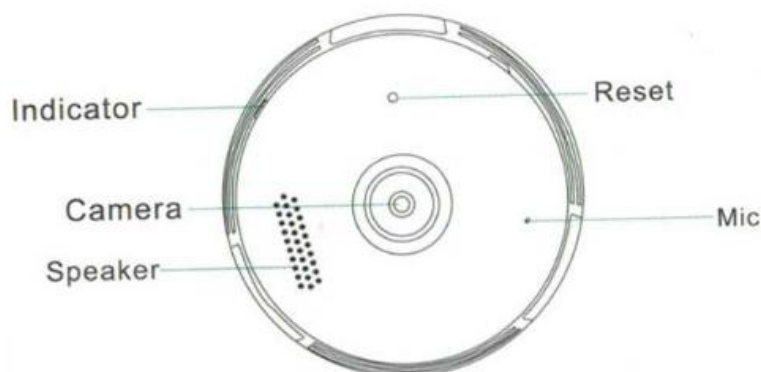
# Panoramic Bulb User Manual

## Precautions:

1. Please confirm whether the voltage meets the requirements before using the products, or improper voltage will damage the device and bring security risk.
2. Please install the device correctly and make sure whether to disconnect the power supply at the time of installation.
3. The device will generate heat in the work, please avoid using in confined spaces.
4. In order to prevent burns, do not touch the device after prolonged use.
5. Please use the camera function legally.

## Interface:

Before use, please pay attention to the interface and button of camera.



## **Operation:**

### **1.Download APP**

#### **Tip 1:Scan QR Code**



Android

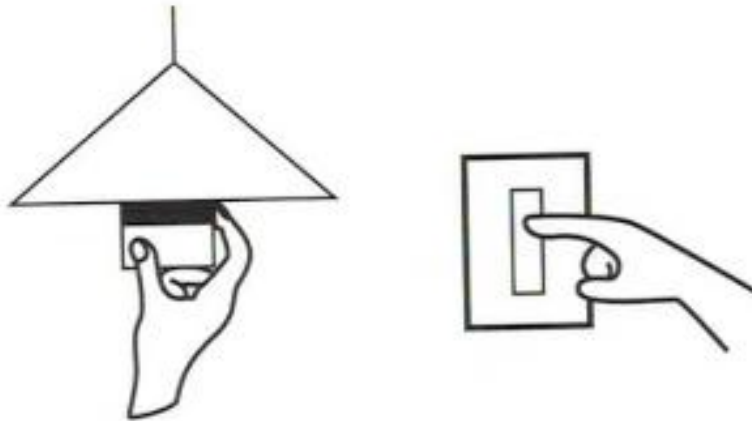


iOS

#### **Tip 2:Search "ICSEE" in the APP Store or Googleplay and download**

### **2.Installation**

**Connect the camera to the power outlet.Screw the bulb into the lamps and turn on the power switch.when the indicator light is red, indicating that the camera power is switched on.**



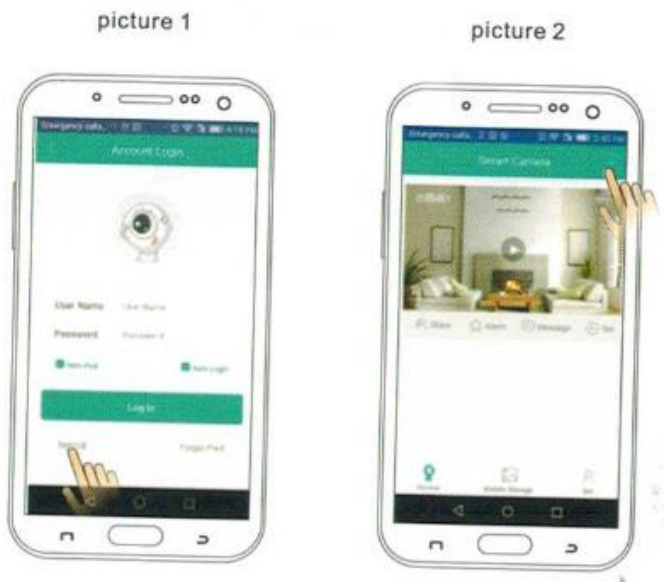
**Attention:At present,the camera supports 802.11b/g/n protocol 2.4g WiFi ,5g WiFi is not supported.please make sure that is through 2.4G connecton between mobile phones and the router.**

### 3.Camera configuration

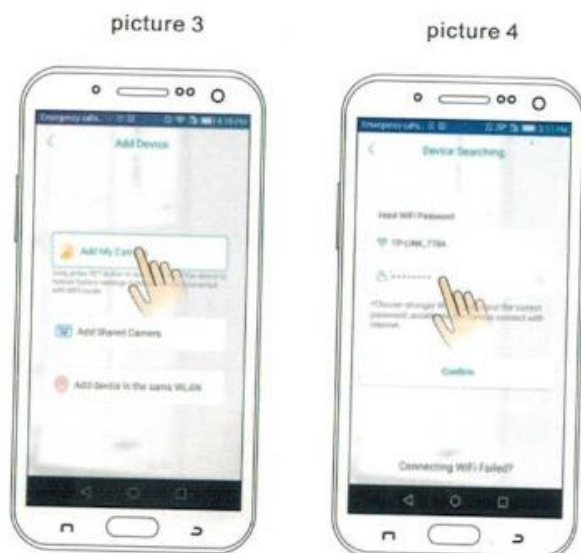
#### User Login

01.open the app"ICSEE",choose the "login"(picture 1).(if you dont have user name ,please register first)

02.After Click "+"(picture 2).

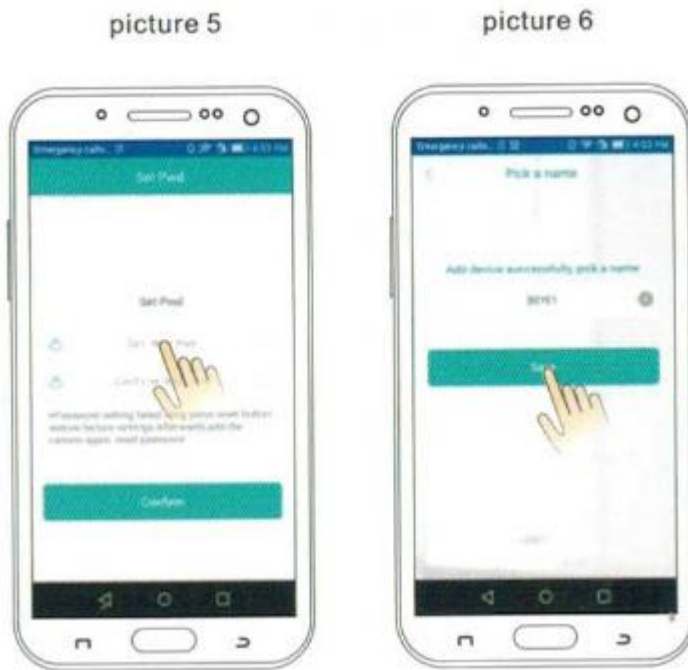


03.Enter to "Add device" (picture 3),please input WiFi router password,(picture 4),then confirm .




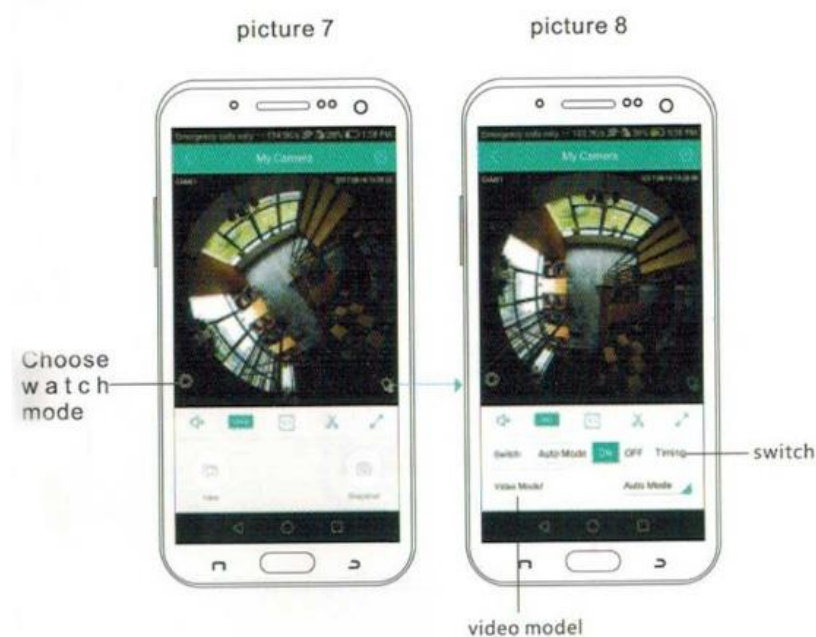
04.After you hear a camera voice"connect successfully",will enter to "set pwd"then confirm (picture 5).

05.after"confirm"will enter to "pick a name"(picture 6).



06.After click"save"will enter to video preview(picture 7).

07.Click the  (picture 7)will enter to (picture 8),you can custom setting about the switch, adjust brightness and video model.



## Temporary User

**Dont need register.Add the device then check video.(The infomation only kept in you mobile phone.if you change the mobile phone,must restart download the app and add device.this login mode don't support alarm push).**

**Open APP"ICSEE",choose temporary visit.**



**click the upper right"+" ,according to promote tips,finish add camera.**

**Please refer to the"User model-02/03"introduce operation.**

## FAQ

**Q:How to store a video camera?**

**A:Currently,the camera support FAT32G format class6,class10 TF Card,max supports 128G.when the TF Card is full,it will delete earlier video automatically and loop recording.**

**Q:The camera be offline,how to do ?**

**A:Check the power and WiFi .**

**Restart the camera .**

**Reconfigure the camera.**

**Check the home Broadband network.**

**Q;How to switch network environment?**

**A:When using in the new network environment,please long press the reset button(SET)for 6 seconds release the button.It means that restored to factory setting successfully .Then you can start to connect network configuration again.**

**Notice**

**While using this product, please modify the user password, to avoid the delinquents misappropriation. Do not install the equipment in damp, dusty, children easy to the venue. please allow within the scope of use and storage of temperature and humidity, do not disassemble it at will.**

**Directions**

**App and device firmware will have new update irregularly, you could upgrade it online at app setting, instructions are for reference only.**